



SPLiNE SPLiNE is a complete lighting system for all kinds of applications. Developed from the ground up with installation, flexibility and efficiency in mind.

SPLiNE

Consisting of separate trunking units, LED batten and track lighting units. The SPLiNE system allows for flexible and modular planning while keeping installation and maintenance fast and simple.



LED battens

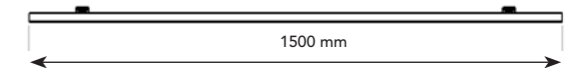
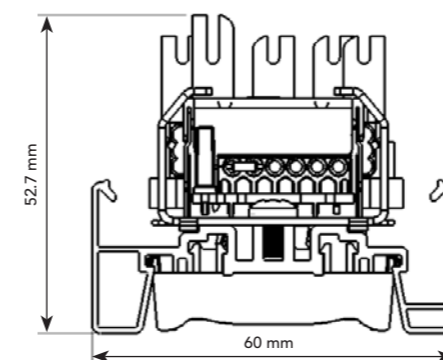
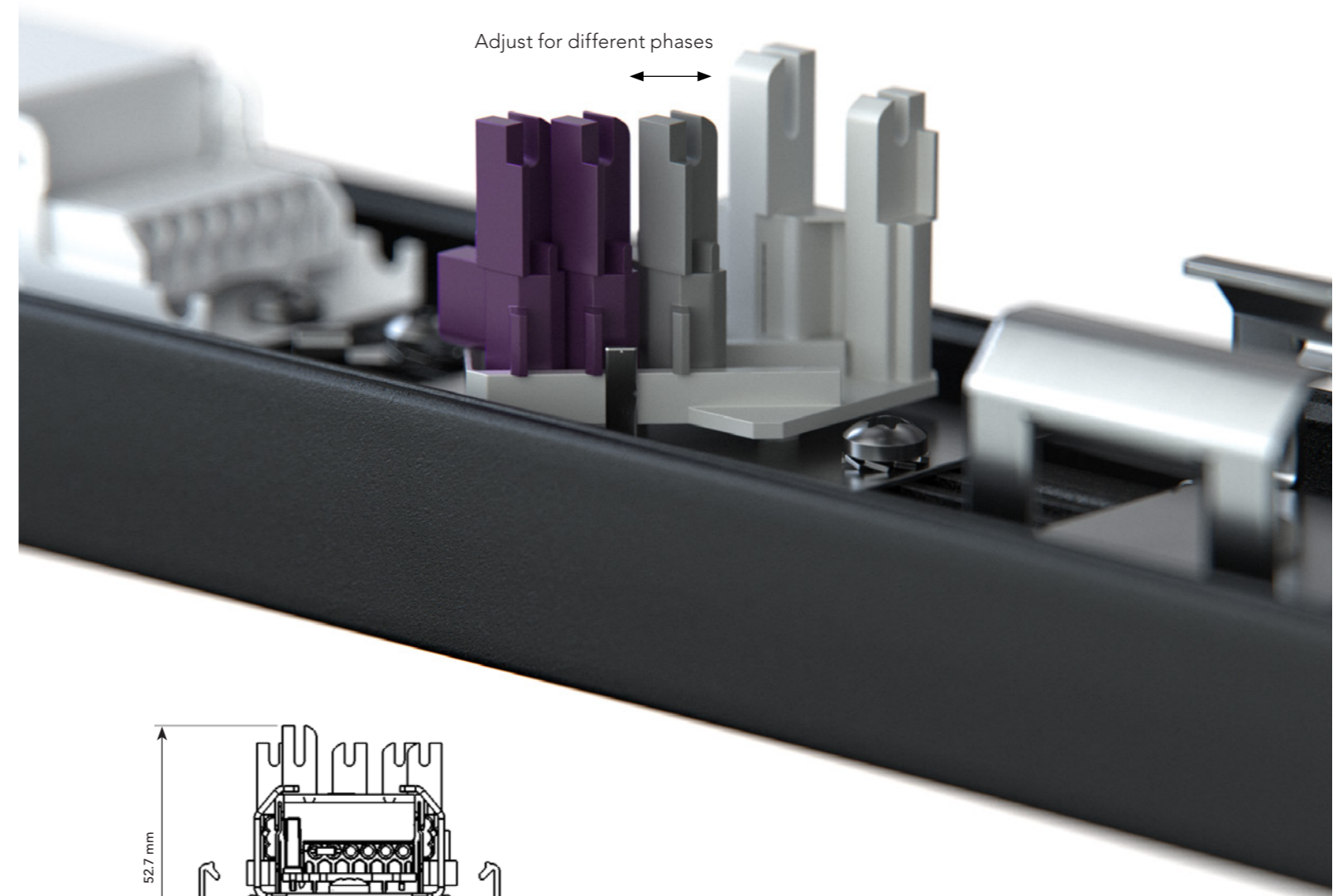
LED battens are designed around a lightweight frame of extruded aluminum with driver and connection system on the top side. On the bottom side there are top performing mid-power LED chips mounted on MCPCB's for optimal thermal management. High purity PMMA lenses to ensure colour stability over time and minimum optical loss.



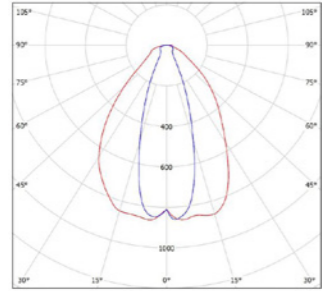
LED battens are available in three different types:

- Pro and Pro X version which offers high efficiency and high lumen output options.
- The Standard, offers lower initial investment cost.

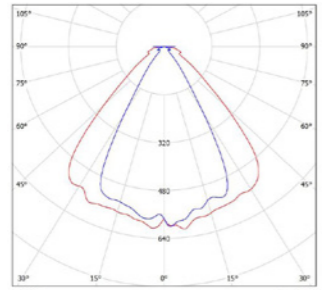
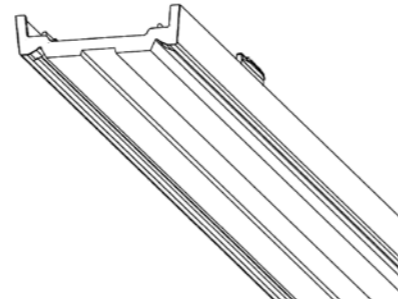
Optionally the LED battens can be fitted with Dali dimmable drivers to enable lighting controls.



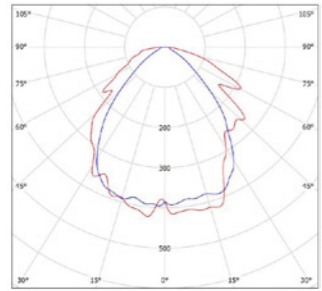
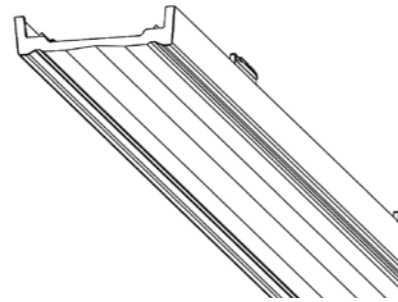
Optics



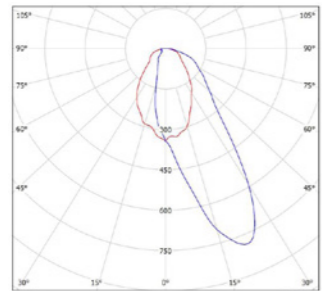
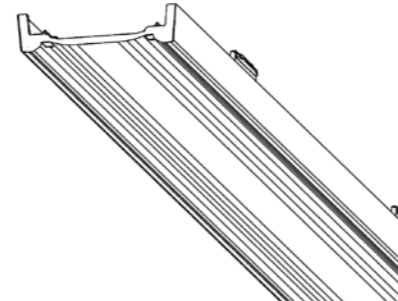
Narrow Ideally suited for illuminating shelving in super-/hypermarkets or warehouses with high ceiling.



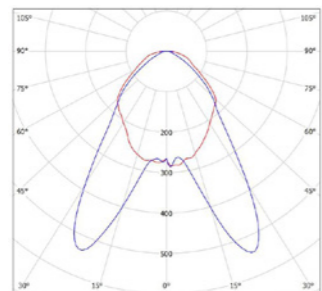
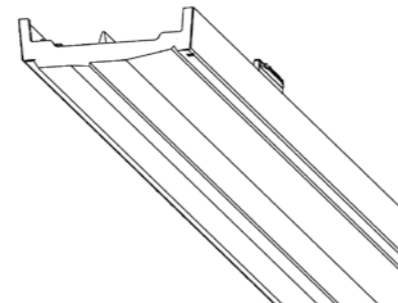
Medium Can be used for mid height or creating a more dynamic atmosphere.



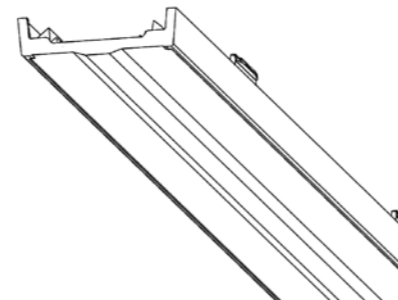
Flood Suitable for illuminating larger open spaces.



Single asymmetric When you only desire lighting on one side.



Double asymmetric Perfect for illuminating shelving in spaces with lower ceilings – no light and energy gets wasted illuminating the aisle floors and glare is minimal.



Standard

Art no (With DALI / Without)	Description	System W	Fixture Lumen	System efficacy ¹	Colour temp.	CRI	EEL ¹
309-(202/205)-00x*-xx**	SPLiNE LED Batten 830	31 W	3850 lm	124 lm/W	3000 K	80	A++
309-(202/205)-01x*-xx**	SPLiNE LED Batten 840	31 W	4000 lm	129 lm/W	4000 K	80	A++
309-(202/205)-10x*-xx**	SPLiNE LED Batten 830	40 W	4850 lm	121 lm/W	3000 K	80	A++
309-(202/205)-11x*-xx**	SPLiNE LED Batten 840	40 W	5000 lm	125 lm/W	4000 K	80	A++
309-(202/205)-20x*-xx**	SPLiNE LED Batten 830	48 W	5800 lm	121 lm/W	3000 K	80	A++
309-(202/205)-21x*-xx**	SPLiNE LED Batten 840	48 W	6000 lm	125 lm/W	4000 K	80	A++
309-(202/205)-30x*-xx**	SPLiNE LED Batten 830	58 W	6750 lm	121 lm/W	3000 K	80	A++
309-(202/205)-31x*-xx**	SPLiNE LED Batten 840	58 W	7000 lm	125 lm/W	4000 K	80	A++

Pro

Art no (With DALI / Without)	Description	System W	Fixture Lumen	System efficacy ¹	Colour temp.	CRI	EEL ¹
309-(203/206)-00x*-xx**	SPLiNE LED Batten 830	37 W	4900 lm	132 lm/W	3000 K	80	A++
309-(203/206)-01x*-xx**	SPLiNE LED Batten 840	37 W	5050 lm	136 lm/W	4000 K	80	A++
309-(203/206)-10x*-xx**	SPLiNE LED Batten 830	45 W	5850 lm	130 lm/W	3000 K	80	A++
309-(203/206)-11x*-xx**	SPLiNE LED Batten 840	45 W	6050 lm	134 lm/W	4000 K	80	A++
309-(203/206)-20x*-xx**	SPLiNE LED Batten 830	52 W	6750 lm	130 lm/W	3000 K	80	A++
309-(203/206)-21x*-xx**	SPLiNE LED Batten 840	52 W	6950 lm	134 lm/W	4000 K	80	A++
309-(203/206)-30x*-xx**	SPLiNE LED Batten 830	60 W	7750 lm	129 lm/W	3000 K	80	A++
309-(203/206)-31x*-xx**	SPLiNE LED Batten 840	60 W	8000 lm	133 lm/W	4000 K	80	A++

Pro X

Art no (With DALI / Without)	Description	System W	Fixture Lumen	System efficacy ¹	Colour temp.	CRI	EEL ¹
309-(204/207)-00x*-xx**	SPLiNE LED Batten 830	80 W	9 650 lm	121 lm/W	3000 K	80	A++
309-(204/207)-01x*-xx**	SPLiNE LED Batten 840	80 W	10 000 lm	125 lm/W	4000 K	80	A++
309-(204/207)-10x*-xx**	SPLiNE LED Batten 830	98 W	11 600 lm	118 lm/W	3000 K	80	A++
309-(204/207)-11x*-xx**	SPLiNE LED Batten 840	98 W	12 000 lm	122 lm/W	4000 K	80	A++

* Add beam spread code to Art.no

** Add color code to Art.no

- xx1 - Narrow
- xx2 - Medium
- xx3 - Flood

- xx4 - Double assymetric
- xx5 - Single assymetric, Left
- xx6 - Singel assymetric, Right

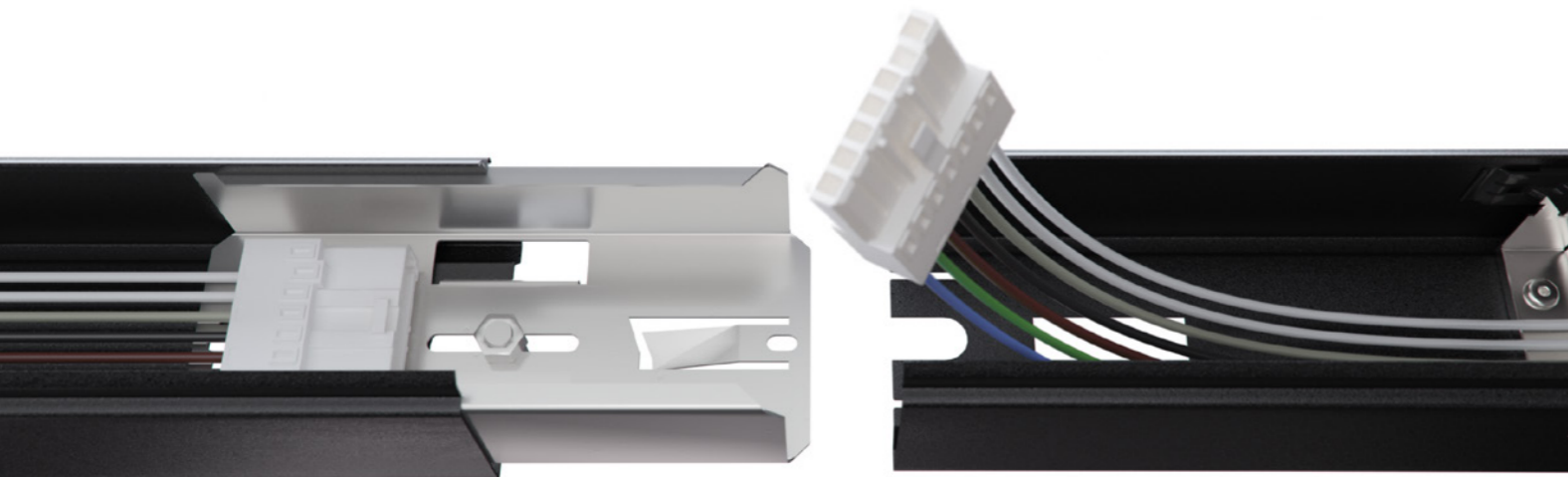
- 10 White
- 20 Black

- 30 Grey
- 00 Anodized

¹ Total system performance including driver and optical losses.

Trunking units

Trunking units are available in lengths of 1500 mm, 3000 mm and 4500 mm. Units are easily assembled and suspended without tools using a joint plate with integrated quick-adjust height suspension.



Suspension kit



Trunking joint



End Cap



Ceiling profile clip

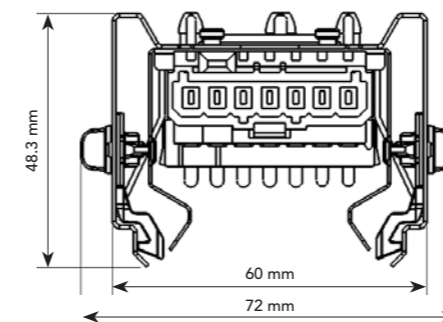
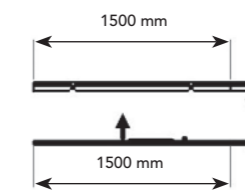
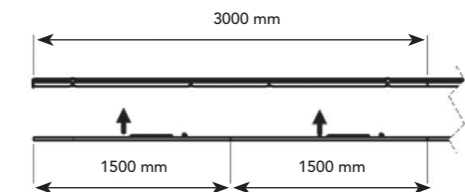
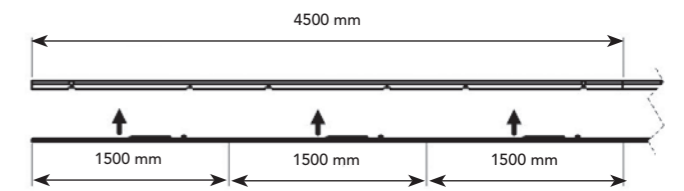
Trunking units

Art no	Description
309-201-001-xx*	Trunking 1500 mm
309-201-002-xx*	Trunking 3000 mm
309-201-003-xx*	Trunking 4500 mm

Accessories

Art no	Description
047-286	Suspension kit 6000 mm
309-308-001-xx*	End Cap
309-303-001	Trunking joint
309-284-001	Ceiling profile clip

*Add color code to Art no
 - 10 White - 30 Grey
 - 20 Black - 00 Galvanized



Supply cable entries

The supply cable can be installed through either one of the two cable entries.



A new batten is easily installed into the existing trunking rail without any tools. Use the lock button to secure the installation.



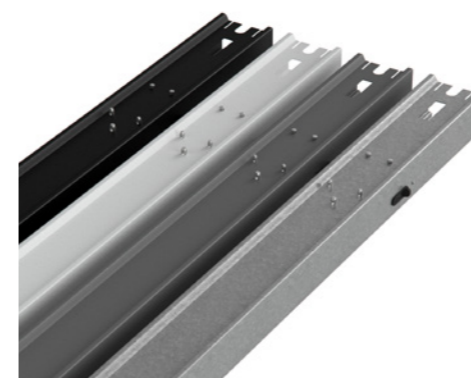
SPLiNE can be installed both as a continuous row or discontinuous with different types of battens depending on lighting needs and installation height. Up to a maximum of 3x16 A per installation.

To add even more flexibility a three phase track unit gives access to our complete range of accent lighting - for discontinued installations a cover is available.

Other battens

Art no	Description
309-208-001-xx*	Track batten
309-287-002-xx*	Cover batten

*Add color code to Art no
 - 10 White - 30 Grey
 - 20 Black - 00 Galvanized



Available in colours black, white, grey and galvanized



Easy mount

